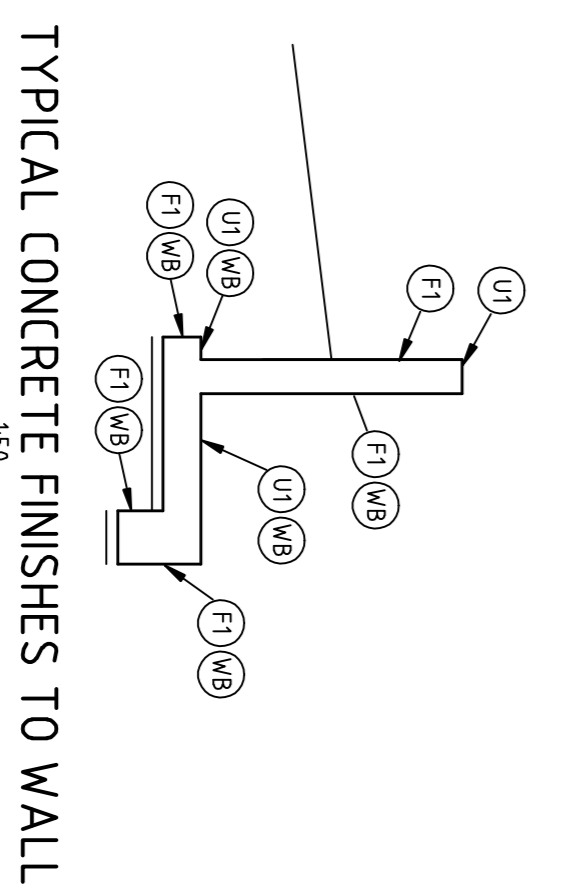
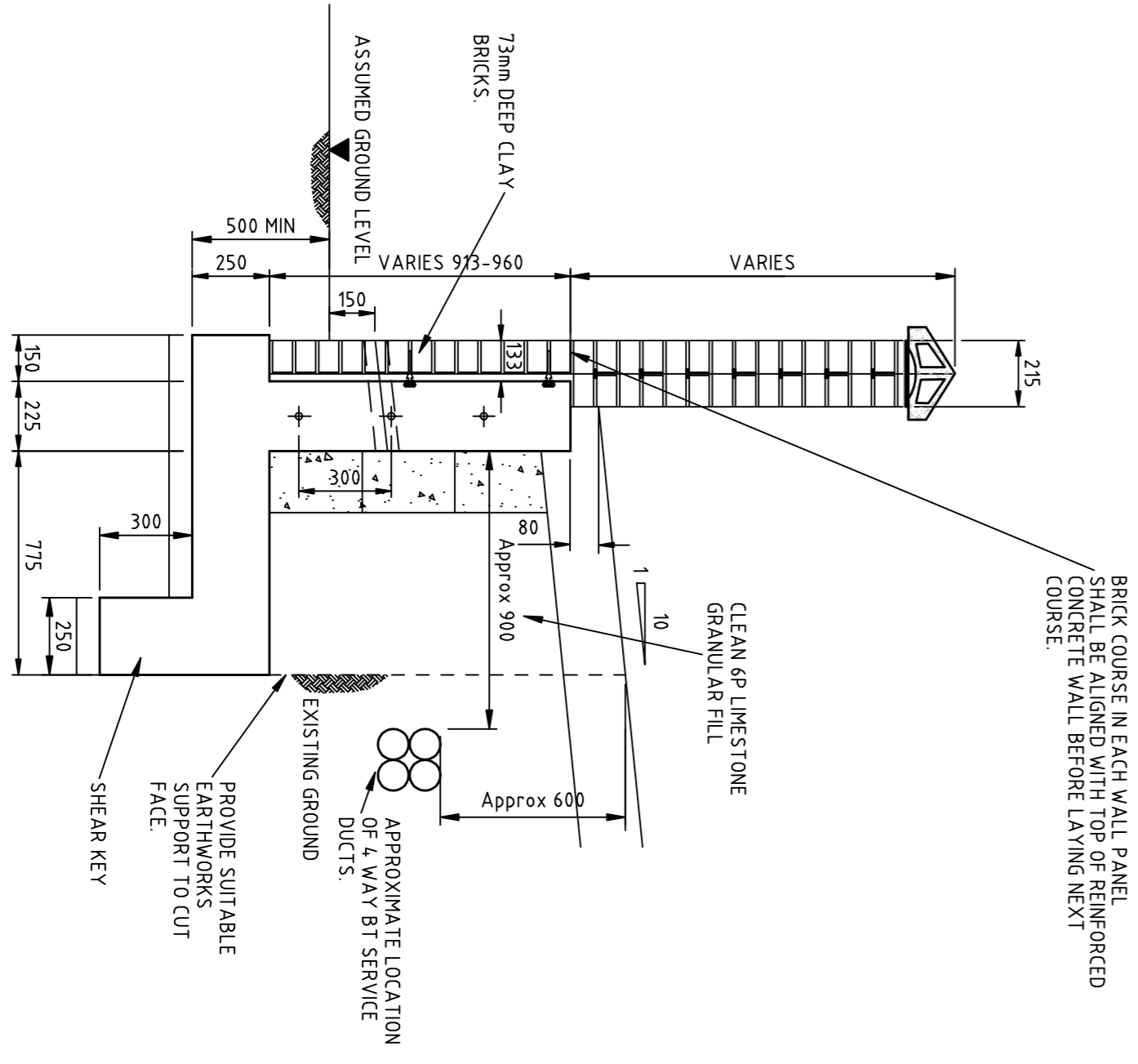
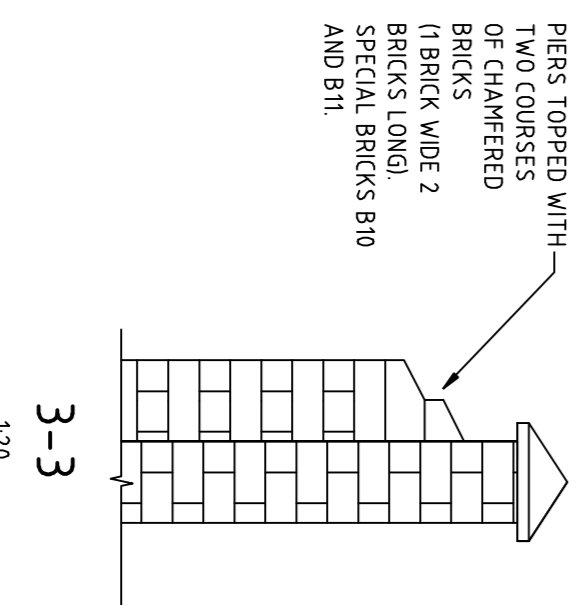
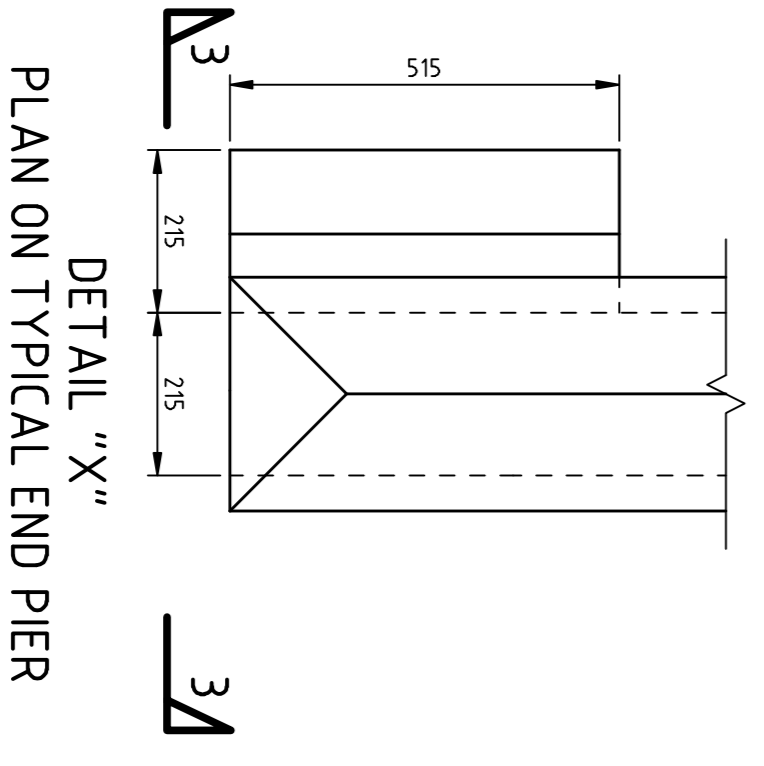
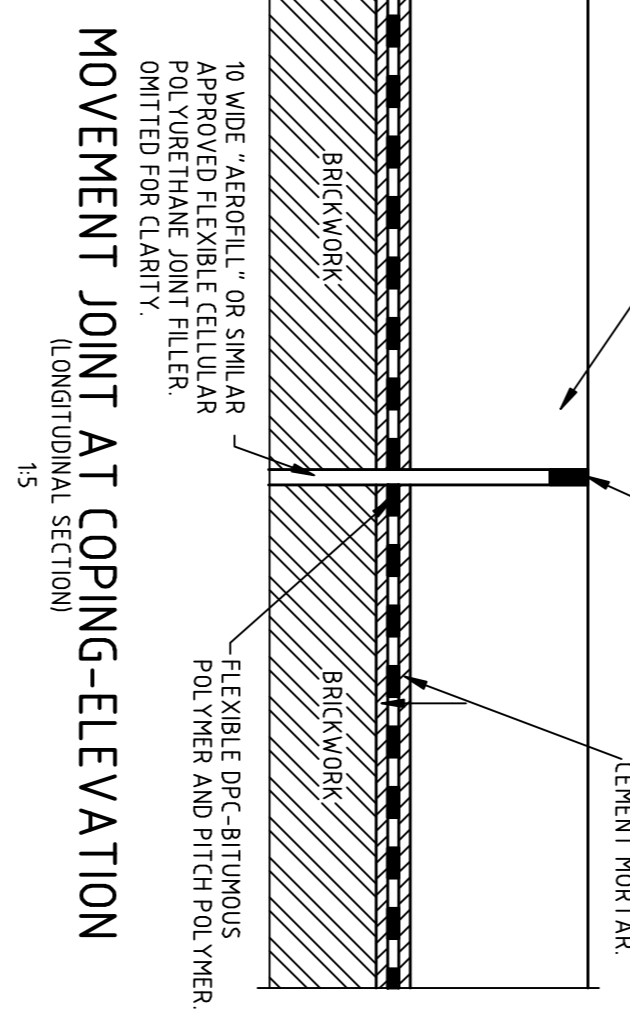
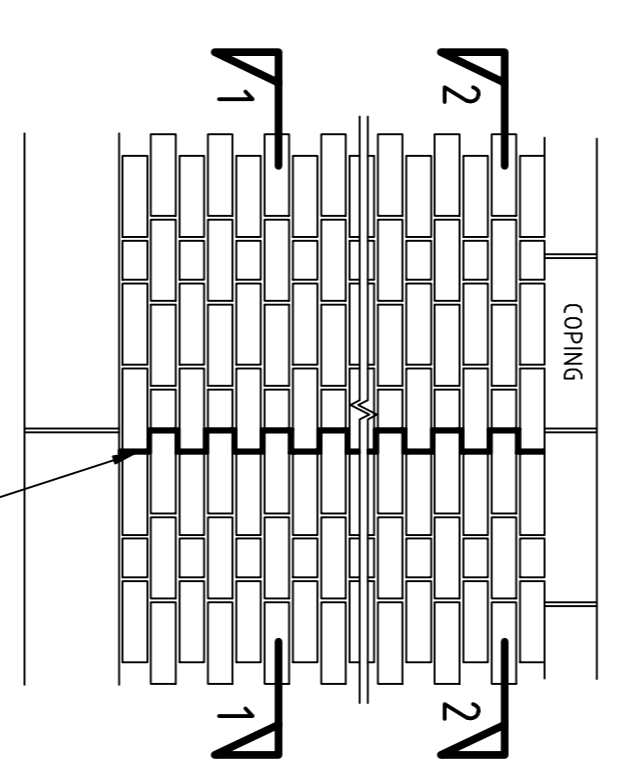
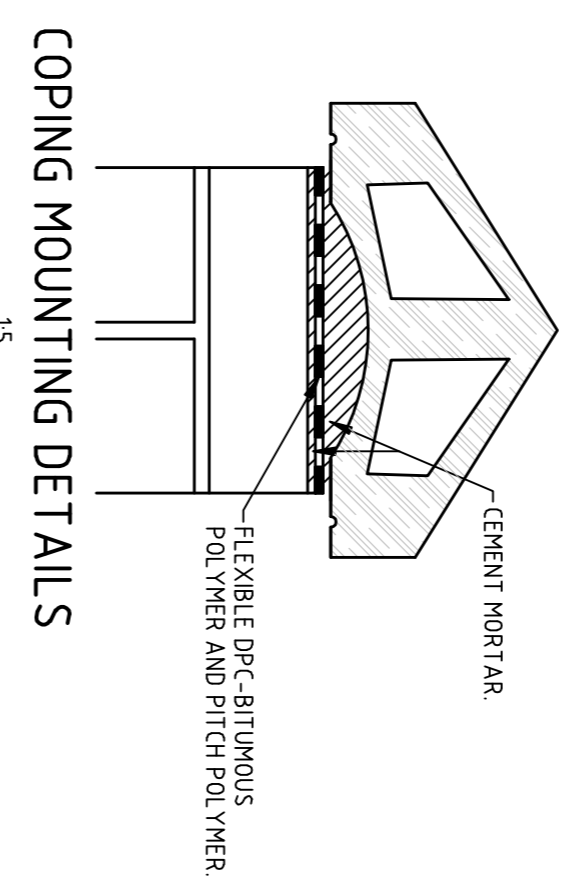
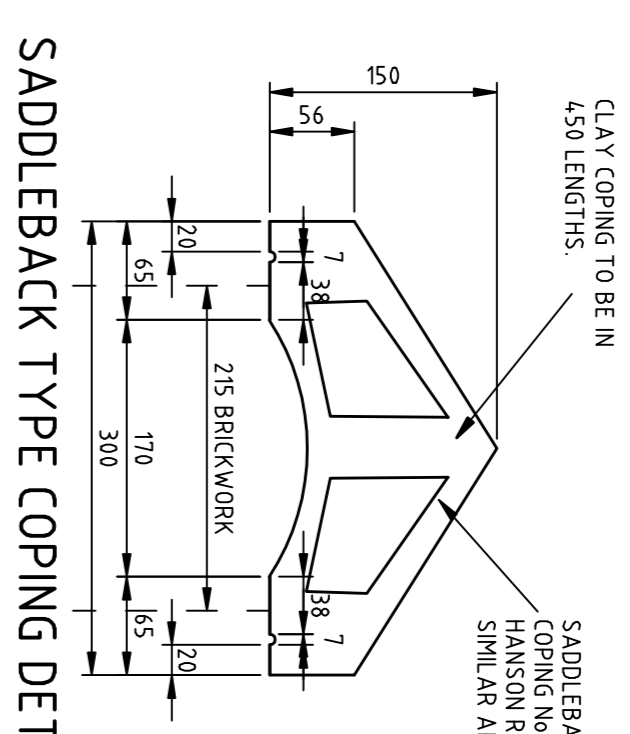
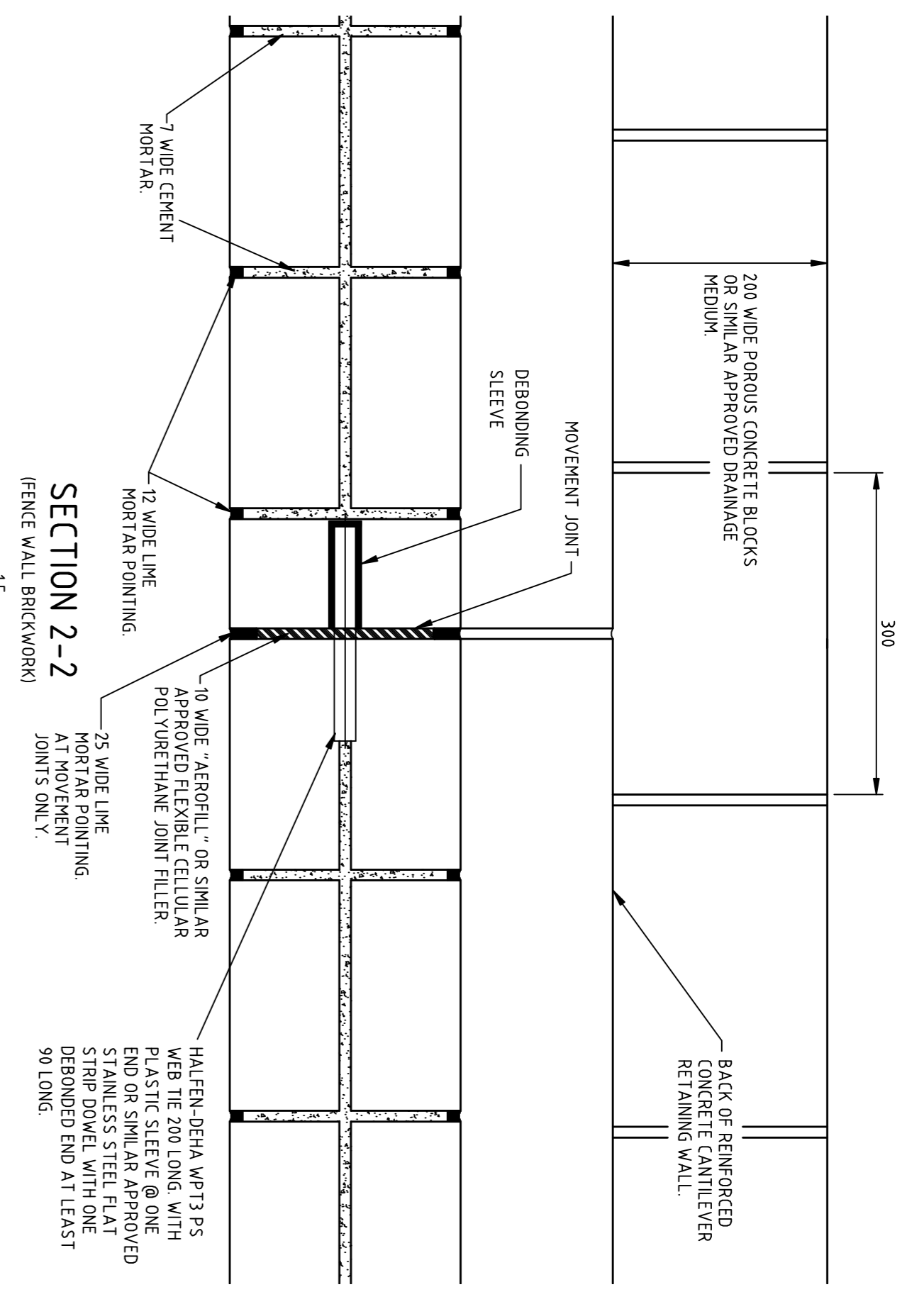
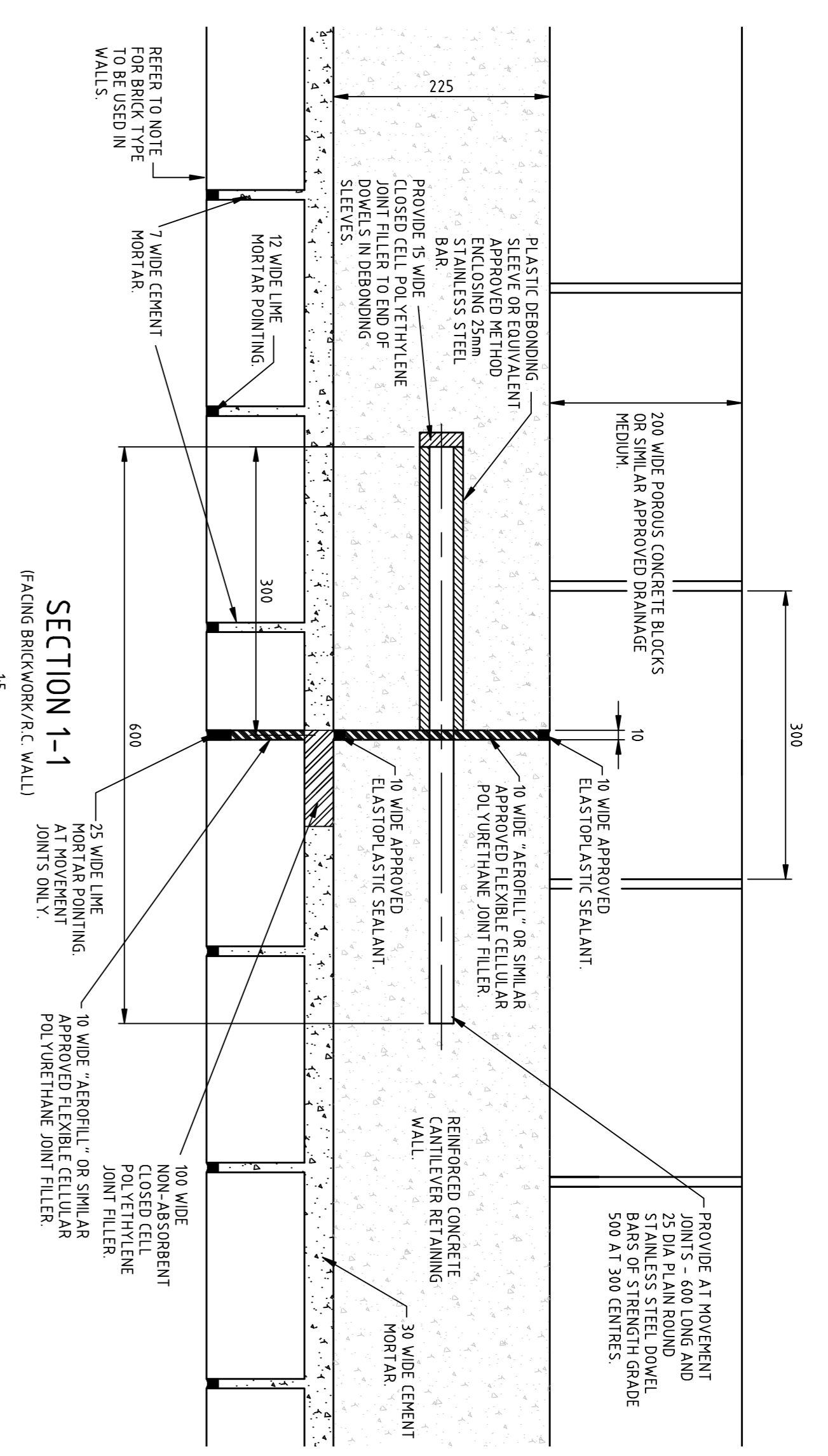


14. THE RETAINING WALL DESIGN HAS ASSUMED AN ALLOWABLE BEARING PRESSURE OF 100kN/m². THE FORMATION MUST BE INSPECTED BY THE GEO-TECHNICAL ENGINEER PRIOR TO CONSTRUCTION TO ASCERTAIN WHETHER ADDITIONAL EXCAVATION AND SUBSEQUENT BACKFILLING OF SOFT SPOTS IS NECESSARY. SEE DRAWING 02/01 OF THE SPECIFICATION FOR MORE DETAIL.

- NOTES**
1. ALL DIMENSIONS ARE IN MILLIMETRES. ALL LEVELS - CHANGEGES AND CO-ORDINATES ARE IN METRES UNLESS OTHERWISE STATED.
 2. THIS DRAWING TO BE READ IN CONNECTION WITH ALL RELEVANT SPECIALISTS DRAWINGS.
 3. CONCRETE CLASSES R.C. RETAINING WALL & FOUNDATION C32/40 B17
 4. NOTATION - CLASS OF FORMED CONCRETE FINISH INDICATED THUS:- (F) FOR CLASS F CLASS OF UNFORMED CONCRETE FINISH INDICATED THUS:- (U) FOR CLASS U CONCRETE SURFACES BELOW GROUND LEVEL TO BE WATERPROOFED ARE INDICATED THUS:- (WB) ALL PARTS OF STRUCTURE IN CONTACT WITH SOIL SHALL BE COATED PRIOR TO BACKFILLING WITH TWO COATS OF A MATERIAL APPROVED FOR WATERPROOFING BELOW GROUND LEVEL.
 5. REFER TO SPECIFICATION APPENDIX 24.1 FOR ADDITIONAL INFORMATION ON BRICKWORK.
 6. HALFEN-DEHA WALL TIES OR SIMILAR APPROVED RESTRAINT SYSTEM SHALL BE USED TO PROVIDE RESTRAINT SYSTEMS SHALL BE 900 HORIZONTAL AND 450 VERTICAL CENTRES AT VERTICAL EDGES AND AT UNRETURNED EDGES OF WALL. ADDITIONAL HALFEN TIES SHALL BE PROVIDED AT A RATE OF ONE PER 300mm HEIGHT PLACED AT NOT MORE THAN 225mm FROM THE EDGE.
 8. WALL TIES BEEDED IN MORTAR. JOINTS SHALL BE SANDWICHED BETWEEN MORTAR IN THE HORIZONTAL BED JOINTS AT THE TIME THE BRICK UNITS ARE LAID.
 9. ALL MOVEMENT JOINTS IN WALLS SHALL BE CONCEALED BY POINTING WITH MORTAR SPECIFIED.
 10. ALL STAINLESS STEEL REINFORCED DOWELS ETC. SHALL BE AUSTENITIC STAINLESS STEEL DESIGNATION 1.4301 COMPLYING WITH THE REQUIREMENTS OF BS EN 10254. ZINC COATED TO PROVIDE ELECTRICAL ISOLATION (BA 84/02)
 11. BRICKS SHALL BE FIRKRESS BRICK OR SIMILAR APPROVED NATURAL ORANGE.
 12. BRICKWORK SHALL BE SET IN 7 MORTAR BED JOINT EXCEPT AT MOVEMENT JOINTS WHERE THE WIDTH OF THE VERTICAL JOINT ONLY SHALL BE 10



STATUS FOR CONSTRUCTION

Approved	HSA	Date	20.02.07
Drawing Number	D105801A/LAK/ST/1.1		
SWADLINCOTE			
MASTER PLAN			

Drawing Title

CIVIC WAY PROPOSED
CAR PARK RETAINING WALL
GENERAL ARRANGEMENT
(SHEET 1 OF 2)

Scale of A1 AS SHOWN

Drawn	Checked	Trach Check	Det. Check	Approved
HS	HS	HS	HS	HS
18	18	18	18	18



DAVID HARVEY
Director of Environmental Services

Scott Wilson Ltd
Dimple Road Business Centre
Dimple Road, Matlock
Derbyshire, DE6 5JY
Tel: 01629 761761
Fax: 01629 761789

