

WOODVILLE AREA

summary profile

What the Area Profile Tells Us....^{Cont'd}

- Average life expectancy is lower for men but higher for women than the District average.
- Crime rates are relatively low and are similar to the Derbyshire average.

You Told Us....

- "There is a real danger that focusing all development in existing urban areas could fail to address the future needs for homes and jobs in the smaller rural settlements."
- "South Derbyshire should work jointly with North West Leicestershire concerning cross boundary development issues."
- "Any new development should be supported by appropriate infrastructure such as significant new roads, a bypass, schools and public open space"
- "There is a need for affordable housing in this area and existing empty properties should be brought back into use."
- "In the National Forest, development should be located around Swadlincote to maintain the otherwise strong rural character of the landscape. The creation of new homes around the fringes of Swadlincote should be seen as an opportunity to improve and enhance the rural urban boundary with quality design."
- "The regeneration of previously developed and under-used land between Woodville and Swadlincote, whilst necessary, needs to be addressed with care to ensure that proper separation of these settlements is maintained and the wider sustainability of such development is fully considered. The Council should plan for employment use, as many jobs have been lost in the area in the last few years."
- "The Woodville Regeneration Route should be referenced in the context of the wider Burton to Swadlincote (A38-A444-A511) regeneration corridor and should be prioritised in the early stages of the Core Strategy, as this will be essential in opening up development sites, which will contribute to the regeneration of Swadlincote."
- "Something must be done about the Clock roundabout, walking and cycling around this area is unpleasant and dangerous."
- "All areas planned for growth should be justified on the basis of their environmental and landscape capacity. The countryside around Hartshorne should be protected from development."

FOR FURTHER INFORMATION CONTACT

Website: www.south-derbys.gov.uk
 E-mail: ldf.issues@south-derbys.gov.uk
 Phone: 01283 595983 or 595821

Obtaining alternative versions of this document
 If you would like this document in another language, or if you require the services of an interpreter, please contact us. This information is also available in large print, Braille or audio format upon request.

Produced by
 South Derbyshire District Council
 Civic Offices, Civic Way,
 Swadlincote DE11 0AH

JANUARY 2011
 Leaflet No. 11 in a series of 11

Photographic credits:
 South Derbyshire District Council 2011

 **recycle**
 for South Derbyshire
 When you have finished with this document please recycle it

WOODVILLE AREA

summary profile

This area includes the parishes of Hartshorne, Woodville and part of the unparished Swadlincote Area



Localism will mean local people getting involved more than ever in shaping the neighbourhoods where they live.

The Council therefore needs **YOUR** help in drawing up the Local Development Framework (LDF) – for deciding where investment in homes, jobs, shops, services and facilities is needed.

We need you to tell us what **YOU** think your neighbourhood needs; what needs to change, what should stay the same.

This summary leaflet, which is one in a series of eleven, presents key facts about your area, describes local issues and summarises opinions about the area which people have previously told us.

A more comprehensive Area Profile and further information on the LDF, including a questionnaire, is available on the Council's website at www.south-derbys.gov.uk

Contact details can be found on the back page of this leaflet.

What the Area Profile Tells Us....

- The population of this area was around 7,800 in June 2009 and there are around 3,200 homes.
- The local population has grown by over 60% since 2001 largely as a result of new housing development in Woodville.
- Woodville has experienced a substantial reduction in local employment opportunities with the loss of numerous employment sites to housing and retail uses.
- Local unemployment rates are higher than in other parts of South Derbyshire.
- The District Council seeks to regenerate the Woodville Regeneration Area to commercial uses, community uses and open space.
- Away from Woodville and Goseley this area is largely rural and is characterised a broad undulating landscape with red brick mining settlements and a mixed farming landscape punctuated by scarcely scattered hedgerow trees, watercourses and the occasional small woodlands.
- Residents in this area in are less likely to be educated to degree level and in turn are less likely to work in highly skilled jobs.
- According to government figures this is one of the most deprived areas in the District and the proportion of people claiming benefits is higher than most other parts of South Derbyshire. *(continued on back page)*



www.south-derbys.gov.uk

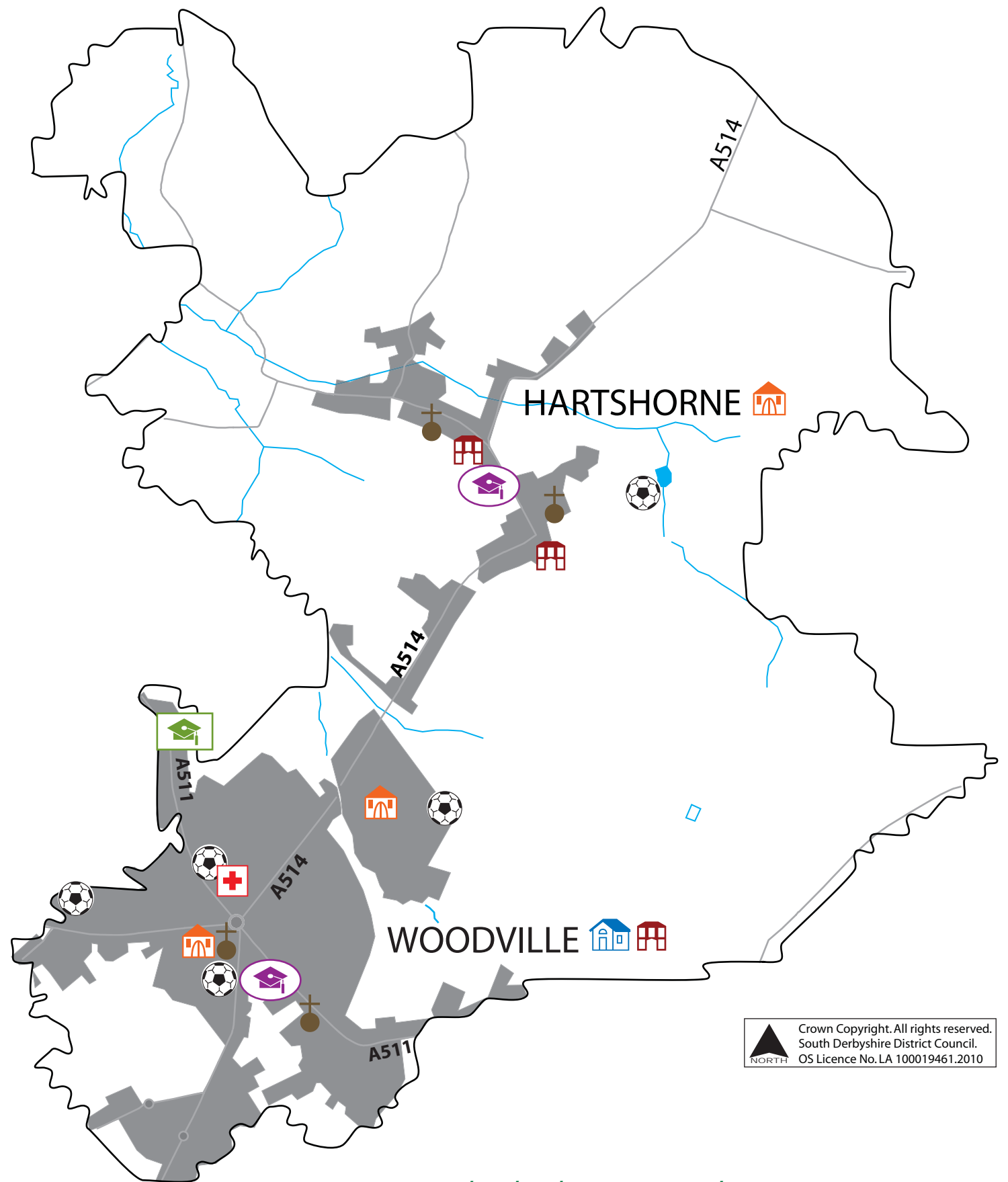


WOODVILLE AREA key features map

This area includes the parishes of Hartshorne, Woodville and part of the unparished Swadlincote area.

KEY

-  Primary School
-  Secondary School
-  Doctors Surgery
-  Place of Worship
-  Village Hall/Meeting Rooms
-  Local Centre/Shop
-  Public House
-  Outdoor Sports Provision



 Crown Copyright. All rights reserved.
 South Derbyshire District Council.
 OS Licence No. LA 100019461.2010

